

# FIXED PRICE TURNKEY PACKAGE



STRATUM AVENUE, DOREEN  
LOT 25  
STRATUM AVE, DOREEN 3754



Matera 15  
15sq

LOT 25 300M<sup>2</sup>  
Title date N/A

Land \$320,000  
Build \$345,900

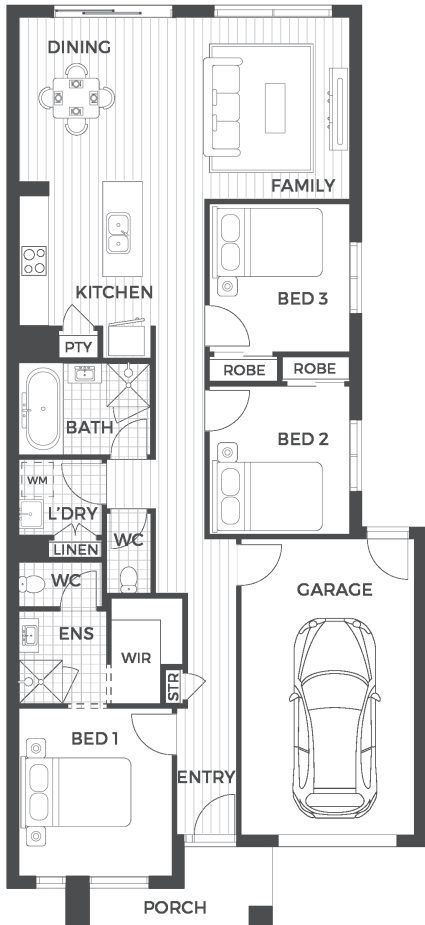
3 2.0 1

## PACKAGE PRICE

**\$665,900\***

## KEY FEATURES

- Fixed site costs and turnkey
- Colourbond roof and garage door
- Blackout blinds throughout
- Timber laminate flooring
- Reconstituted stone bench to kitchen & bathroom
- Flyscreens to windows
- LED downlights throughout
- Landscaping front and rear
- Driveway, fencing and paving
- Estate guidelines included



The plan & design of this house is owned by Creation Homes & under the copyright act of 1968 cannot be reproduced in any shape or form without prior written authorisation from Creation Homes. Any doing so will be liable for action under the act. Plans shown are indicative only and are subject to minor change in the interest of product improvement. \*Price current as of 15/03/2023 based on Developer supplied engineering plans and plan of subdivision. Price does not include stamp duty, government, legal or bank charges. Creation Homes (VIC) Pty Ltd Builder's License: CDB-U 49348.